A photograph of three students in a classroom or computer lab. A male student in a maroon sweater and white shirt is in the foreground, looking towards the right. Behind him, two female students, also in maroon sweaters and white shirts, are looking at a computer monitor. One of the female students is pointing at the screen. The monitor displays a technical drawing of a wheel. The background shows a typical classroom setting with desks and equipment.

**SEAVIEW HIGH SCHOOL  
STRATEGIC PLAN**



# STRATEGIC DIRECTIONS

## 2017 – 2021

**Seaview High School** is an inclusive, learning community, which supports students to develop lifelong learning practices by providing opportunities for them to negotiate, self-direct and self-regulate their learning.

### VISION

Seaview High School is committed to preparing students for life beyond school, by providing challenging and enriching learning opportunities and supporting students to achieve their personal best.

### PRIORITIES

We work to:

1. Ensure a safe and friendly environment
2. Develop a deep understanding of all students and to instill a sense of pride in student achievement and success
3. Develop a challenging and relevant curriculum which meets the future needs of all learners via innovative and flexible teaching and learning programs
4. Enrich and celebrate our community's international and intercultural understandings and opportunities.

### VALUES

The Seaview High School Community's actions and interactions are based on respect, empathy, resilience and integrity.

### GOALS: TO ATTRACT, RETAIN AND ENGAGE STUDENTS AND IMPROVE ACHIEVEMENT

#### STAFF AND STUDENTS ARE COMMITTED TO:

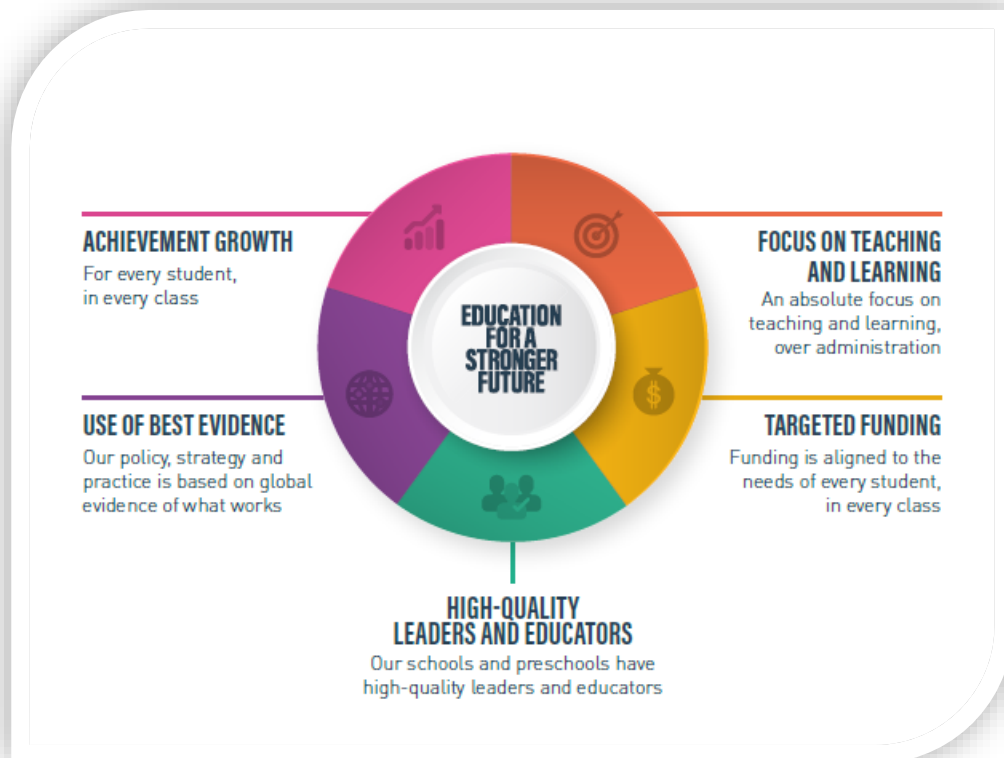
- Delivering innovative teaching and learning programs that enhance educational outcomes for all
- Implementing pedagogies that are adapted to today's learners and leverage technology to enhance learning
- Increasing the range of partnerships and pathways for young people
- Developing the Australian Curriculum and SACE capabilities in authentic contexts

Seaview High School's Site Improvement Plan is underpinned by the DECD's strategic plan: **EDUCATING FOR A STRONGER FUTURE** and its vision to build a world-class education and child development system in South Australia.

## DECD KEY PRIORITIES

- Great start: Children have a strong, supportive start to life and learning.
- High achievement: We have high standards and support all children and young people to achieve their best.
- Fairness for all: All children receive a quality education, whatever their circumstances. We want to close the gap in outcomes for children and young people.
- Learning in partnership: We will work towards partnerships with families, in the community and across the world to support our children and young people.
- Better futures: Young people are prepared for work and life in a transforming economy.

### EDUCATION FOR A BETTER FUTURE



Seaview High School is a member of the Marion Coast Partnership and is committed to working towards Partnership Priorities

## MARION COAST PARTNERSHIP KEY PRIORITIES

### Quality Teaching and Learning Pre-School -12

- Implement effective pedagogical approaches to the teaching & learning of numeracy across Pre-school-12
- Improve learner dispositions through Growth Mindset, Resilience and Authentic Student Voice to support effective learning
- Targeted Teaching for all students

### KEY ACTIONS for 2018:

- Set targets that are more ambitious than those set in the previous plan to support further growth in student outcomes
- Continue to strengthen the performance and retention of individual students in the high proficiency students in the high bands in numeracy and reading.

# SEAVIEW HIGH SCHOOL STRATEGIC PRIORITIES

Developing successful learners

Developing confident, [resilient] creative and independent individuals

Developing active and informed citizens

[Melbourne Declaration on Educational Goals for Young Australians]



	SITE Priorities	Focus for 2018
Developing successful learners	1:1 Learning is personalised and intellectually challenging	<ul style="list-style-type: none"> <li>Teachers provide Active Learning opportunities for students</li> <li><b>Teachers co-design tasks with students to support differentiation and intellectual challenge for all learners</b></li> <li><b>Assessment is intentional and used to move learning forward</b></li> <li>Authentic contexts are enhanced through community partnerships</li> </ul>
	1:2 All staff are supported to improve their practice	<ul style="list-style-type: none"> <li><b>Performance Development enhances student learning and achievement</b></li> <li>AITSL accreditation is promoted and supported</li> <li>TfEL Compass [Student Feedback] is used to improved task design and opportunities for stretch thinking</li> <li>Student Learning Rounds recommendations are endorsed by staff and implemented</li> </ul>
Developing confident, resilient creative and independent individuals	2:1 Students feel confident and supported to take risks in their learning	<ul style="list-style-type: none"> <li><b>Positive Psychology (PERMA) is embedded in classroom practice</b></li> <li>Teachers continue to focus on improving learner dispositions by engaging the language of a growth mindset</li> <li>A STEM approach is implemented across all curriculum areas</li> <li>Educators use data to inform practice and targeted interventions</li> </ul>
	2:2 Students develop <i>essential skills</i> [collaboration, communication, self-regulation, resilience] and <i>general capabilities</i> :	<ul style="list-style-type: none"> <li>All teachers teach the general capabilities [literacy, numeracy, ethical understanding, intercultural understanding and critical and creative thinking] explicitly</li> <li>Cross - Curriculum priorities are embedded</li> <li>Participation in a range of curricular and co-curricular activities is actively promoted and supported</li> </ul>
Developing active and informed citizens	3:1 Seaview High School is an inclusive Learning Community	<ul style="list-style-type: none"> <li><b>Student Voice is used to inform and influence improvement in all areas of the school</b></li> <li>All students are included, supported and feel valued members of the community</li> </ul>
	3:2 Enriched Global Understandings enhance learning	<ul style="list-style-type: none"> <li>Continue to develop International Programs</li> <li>Continue to broaden a range of cultural and intercultural opportunities</li> <li>Promote and support short-term exchanges</li> </ul>
	3:3 Seaview <i>continues to be recognised as a school of choice</i>	<ul style="list-style-type: none"> <li>Continue School promotion and marketing strategy</li> <li>Continue to develop and deliver High Quality Specialist Programs</li> <li>Continue focus on whole school improvement</li> </ul>